

London Theatre Guide 2018-2019

42ND STREET

MUSICAL

Peggy Sawyer is fresh off the bus from small-town America and just another face in the chorus line on Broadway's newest show. When the leading lady gets injured, she might just have the shot at stardom she's always dreamed of. An all-singing, high-kicking cast brings to life classics like We're In The Money, Lullaby of Broadway, I Only Have Eyes For You, 42nd Street.

SCHEDULE: Monday – Saturday. Dark Sunday.

Until 29 Nov 18

VENUE: Theatre Royal Drury Lane, Catherine St, WC2B Nearest Tube: Covent Garden



ALADDIN

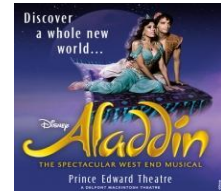
MUSICAL

Featuring the timeless songs from the classic film including A Whole New World, Friend Like Me and Arabian Nights along with new music written for the production, a legendary creative team, a fabulous cast and orchestra, and over 350 costumes brings to theatrical life Disney's world filled with beauty, comedy and breath-taking spectacle that can't be missed.

SCHEDULE: Monday – Saturday. Dark Sunday.

Until 1 Dec 18

VENUE: Prince Edward Theatre, Old Compton St, W1 Nearest Tube: Leicester Square



AS YOU LIKE IT

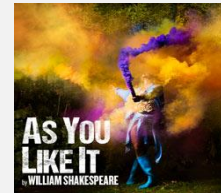
PLAY

Open Air Theatre presents William Shakespeare's comedy of adventure, sibling rivalry, mistaken identity and romance. In the mythical Forest of Arden, a world of transformation where anything is possible and anything permissible, two young people discover what it really means to be in love. Features beautiful new music by former Noah and the Whale frontman Charlie Fink.

SCHEDULE: Monday – Saturday. Dark Sunday.

From Jul 6 to 28.

VENUE: Regent's Park Open Air Theatre, NW1 Nearest Tube: Baker Street



THE BAND

MUSICAL

Take That are proud to present their new musical, written for anyone who grew up with a boyband. It's 1993 and for five 16 year old girls, the band is everything. Join us as this group of girls who were once inseparable reunite after 25 years apart and try once more to fulfil their dream of meeting the boyband whose music became the soundtrack to their lives.

SCHEDULE: Monday – Saturday. Dark Sunday.

From Dec 18 to 12 Jan 19

VENUE: Theatre Royal Haymarket, Haymarket, SW1Y Nearest Tube: Piccadilly Circus



BAT OUT OF HELL

MUSICAL

Jim Steinman's epic rock and roll theatrical fantasy, the inspiration for one of the most iconic and successful albums in history, is a full throttle tale of teenage love, youthful rebellion and living the rock and roll dream. Featuring 17 of Meat Loaf's greatest hits, including "I'd Do Anything for Love", "Paradise by the Dashboard Light", "You Took the Words Right Out of My Mouth."

SCHEDULE: Monday – Saturday. Dark Sunday.

Until 27 Oct 18

VENUE: Dominion Theatre, Tottenham Court Rd, W1P Nearest Tube: Tottenham Court Rd



THE BOOK OF MORMON

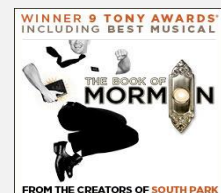
MUSICAL

Winner of 4 Oliviers and 9 Tony Awards, including Best Musical! Vogue says "it's the funniest musical of all time." The New York Times says "it's the best musical of this century." It's the Broadway phenomenon from 'South Park' creators Trey Parker and Matt Stone and 'Avenue Q' co-creator Robert Lopez. Time Out New York calls it "musical comedy heaven."

SCHEDULE: Monday – Saturday. Dark Sunday.

Until 15 Sep 18

VENUE: Prince of Wales Theatre, Coventry Street, W1 Nearest Tube: Piccadilly Circus



BRIEF ENCOUNTER

PLAY

This award-winning Kneehigh production has triumphed in the West End, toured the globe and opened to dazzling reviews on Broadway. Coming home to where it all began, this lovingly staged multimedia production uses stage, screen and joyous theatricality to marry the much-loved film classic with the original Noel Coward stage love story.

SCHEDULE: Tuesday – Sunday. Dark Saturday.

Until 9 Sep 18

VENUE: Empire Cinema Haymarket, St James, SW1Y

Nearest Tube: Piccadilly Circus



CAROLINE, OR CHANGE

MUSICAL

Transferring to the West End following sell-out runs at the Chichester Festival and Hampstead Theatres, this playful, funny, and deeply moving tale set to a score that hits new heights of emotion, in a production that always delights with imagination. Written by Tony Kushner (Angels in America), with score from Jeanine Tesori, and starring Sharon D. Clarke.

SCHEDULE: Monday – Saturday. Dark Sunday.

From Nov 20

VENUE: Playhouse Theatre, Northumberland, WC2N

Nearest Tube: Embankment



CHICAGO

MUSICAL

The sexiest, sassiest, most sophisticated musical in history returns to London's West End more dangerously seductive than ever. This multi-award-winning tale of Roxie Hart, Velma Kelly and Billy Flynn (Cuba Gooding Jr. to June 30) thrills audiences with red-hot Fosse choreography and a sizzling score, including "Razzle Dazzle" and "All That Jazz."

SCHEDULE: Monday – Saturday. Dark Sunday.

Until 6 Oct 18

VENUE: Phoenix Theatre, Charing Cross Road, WC2H

Nearest Tube: Charing Cross



THE COMEDY ABOUT A BANK ROBBERY

COMEDY

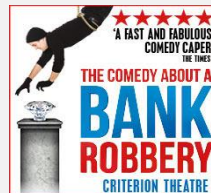
One giant diamond. Eight incompetent crooks. And a security guard asleep on the job. What could possibly go right? Written by and starring the Mischief Theatre Company (who brought you the 2015 Olivier award-winning Best New Comedy "The Play That Goes Wrong"), be entertained by their unique brand of humour in this hilarious new show. It would be criminal to miss it.

SCHEDULE: Tuesday – Sunday. Dark Monday.

Until 7 Apr 19

VENUE: Criterion Theatre, Piccadilly Circus, W1

Nearest Tube: Piccadilly Circus



COMPANY

MUSICAL

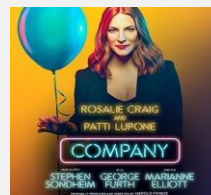
Stephen Sondheim's iconic musical about life, love and marriage comes to the West End with the lead role of "Bobby" re-imagined for the first time as a woman. Featuring Stephen Sondheim's iconic songs – The Ladies Who Lunch, Being Alive and Side by Side – and starring Rosalie Craig as Bobbi and Tony and Olivier award-winner Patti LuPone as Joanne.

SCHEDULE: Monday – Saturday. Dark Sunday.

From 26 Sep to 22 Dec 18

VENUE: Gielgud Theatre, Shaftesbury Road, W1D

Nearest Tube: Piccadilly Circus



DINOSAUR WORLD LIVE

EVENT

Grab your compass and discover a prehistoric world of astonishment. Meet a host of impressive creatures, including every child's favourite flesh-eating giant, the Tyrannosaurus rex, a Triceratops, Giraffatitan and Segnosaurus, to name a few! Dinosaur World Live promises to be an entertaining and mind-expanding daytime adventure for the whole family!

SCHEDULE: Friday – Wednesday. Dark Thursday.

From 14 Aug to 9 Sep 18

VENUE: Regent's Park Open Air Theatre, NW1

Nearest Tube: Baker Street



DREAMGIRLS

MUSICAL

Thirty-five years after the ground-breaking original Broadway production, DREAMGIRLS transports you to a revolutionary time in American music history, inspired by R&B music acts of the 1960s, charting the tumultuous journey of a young female singing trio, from Chicago, Illinois called 'The Dreams', as they learn the hard lesson that show business is as tough as it is fabulous.

SCHEDULE: Monday – Saturday. Dark Sunday.

VENUE: Savoy Theatre, The Strand, WC2

Until 12 Jan 18

Nearest Tube: Charing Cross



EVERYBODY'S TALKING ABOUT JAMIE

MUSICAL

Jamie New is sixteen and lives on a council estate in Sheffield. Jamie doesn't quite fit in. Is terrified about the future. Is going to be a sensation. Supported by his brilliant loving mum and surrounded by his friends, Jamie overcomes prejudice, beats the bullies and steps out of the darkness, into the spotlight. Fearless, funny, fabulous - a coming-of-age story with a twist!

SCHEDULE: Monday – Saturday. Dark Sunday.

VENUE: Apollo Theatre, Shaftesbury Ave, W1D

Until 6 Apr 19

Nearest Tube: Piccadilly Circus



AN IDEAL HUSBAND

COMEDY

The Rolls-Royce of English comedies, Oscar Wilde's An Ideal Husband, brings an act of political sin into the heart of the English home. An ambitious government minister, Sir Robert Chiltern's smooth ascent to the top seems assured. Until Mrs Cheveley appears in London with damning proof of his previous financial chicanery.

SCHEDULE: Monday – Saturday. Dark Sunday.

VENUE: Vaudeville Theatre, Strand, WC2R

Until 14 Jul 18

Nearest Tube: Charing Cross



IMPERIUM I: CONSPIRATOR

PLAY

Told through the watchful eyes of Cicero's loyal secretary, Imperium I: Conspirator chronicles how the great orator's early success unwittingly paves the way for a brutal and bloody end to the Republic. As law and order begins to break down, who controls the mob controls Rome: Cicero, Catiline, Caesar or the charming but vicious playboy, Publius Clodius?

SCHEDULE: Monday – Saturday. Dark Sunday.

VENUE: Gielgud Theatre, Shaftesbury Road, W1D

From 14 Jun to 8 Sep 18

Nearest Tube: Piccadilly Circus



IMPERIUM II: DICTATOR

PLAY

With Rome in chaos at the beginning of Imperium II: Dictator, Cicero, determined to prevent Antony imposing a military dictatorship on Rome, Cicero forms an unlikely alliance with the 19-year-old great-nephew and heir of Julius Caesar. Confident that he can control the boy and use him to destroy Mark Antony, Cicero sets out to save the Republic.

SCHEDULE: Monday – Saturday. Dark Sunday.

VENUE: Gielgud Theatre, Shaftesbury Road, W1D

From 14 Jun to 8 Sep 18

Nearest Tube: Piccadilly Circus



THE IMPORTANCE OF BEING EARNEST

COMEDY

Widely considered one of the funniest plays in English, Oscar Wilde's much loved masterpiece throws love, logic and language into the air to make one of theatre's most dazzling firework displays. Jack, Algy, Gwendolyn and Cecily discover how unsmooth runs the course of true love, while Lady Bracknell keeps a baleful eye on the mayhem of manners.

SCHEDULE: Monday – Saturday. Dark Sunday.

VENUE: Vaudeville Theatre, Strand, WC2R

From 20 Jul to 20 Oct 18

Nearest Tube: Charing Cross



KILLER JOE

In Tracy Letts' multi-award-winning, blackly comic thriller, The Smith family hatch a plan to murder their estranged matriarch for her insurance money. They hire Joe Cooper (Orlando Bloom), a police detective and part-time contract killer, to do the job. But once he enters their trailer home and comes face to face with their innocent daughter, the plan spirals out of control.

SCHEDULE: Monday – Saturday. Dark Sunday.
VENUE: Trafalgar Studios, Whitehall, SW1A

Until Aug 18
Nearest Tube: Charing Cross

PLAY



THE KING AND I

Bartlett Sher's multi-award winning Broadway production transfers to the West End, with the Tony Award-winning Kelli O'Hara and Tony-nominated Ken Watanabe reprising their role, joined on stage by a company of over 50 world-class performers. Featuring the classic score including Whistle a Happy Tune, Getting to Know You, and Shall We Dance.

SCHEDULE: Monday – Saturday. Dark Sunday.
VENUE: London Palladium, Argyll Street, W1F

From 21 Jun to 29 Sep 18
Nearest Tube: Oxford Circus

MUSICAL



KING LEAR

Following its sold-out run at Chichester Festival Theatre, Jonathan Munby's explosive revival of transfers to the West End, starring Sir Ian McKellen. This contemporary, dystopian production of Shakespeare's epic tragedy places audiences at the centre of the storm with its intimate staging, as family and state are plunged into a violent power struggle with shocking ends.

SCHEDULE: Tuesday – Saturday. Dark Sunday – Monday.
VENUE: Duke of York's Theatre, St. Martin's Ln, WC2

From 11 Jul to 3 Nov 18
Nearest Tube: Piccadilly Circus

PLAY



KINKY BOOTS

This Olivier and Tony-winning hit musical is a joyous celebration about the friendships we discover, the families we make and the belief that you can change the world when you change your mind. From a gentlemen's shoe factory in Northampton to the glamorous catwalks of Milan, feel the elation, and cheer on the characters and learn that sometimes the best way to fit in is to stand out...

SCHEDULE: Monday – Saturday. Dark Sunday.
VENUE: Adelphi Theatre, Strand, WC2R

Until 5 Jan 18
Nearest Tube: Covent Garden

MUSICAL



KNIGHTS OF THE ROSE

Even as the noble and chivalrous Knights of the Rose return from a glorious victory, a greater threat against the kingdom stirs. As they face the greatest battle of the Age, and betrayal threatens to tear them apart, can true love and honour triumph? Featuring the ultimate playlist, with legendary ballads and timeless anthems from Bon Jovi, Meatloaf, Bonnie Tyler, No Doubt and many more.

SCHEDULE: Monday – Saturday. Dark Sunday.
VENUE: Arts Theatre, 6-7 Great Newport St, WC2H

From 29 Jun to 26 Aug 18
Nearest Tube: Leicester Square

MUSICAL



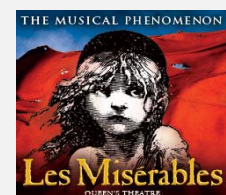
LES MISÉRABLES

Cameron Mackintosh's legendary production of *Les Misérables* is indisputably the world's most popular musical. This international award-winning show sweeps its audience through an epic tale of passion and power set against the backdrop of a nation in the grip of revolution. A spectacular adaptation of Victor Hugo's masterpiece novel, *Les Misérables* continues to thrill audiences night after night.

SCHEDULE: Monday – Saturday. Dark Sunday.
VENUE: Queen's Theatre, Shaftesbury Avenue, W1

Until 5 Jan 18
Nearest Tube: Piccadilly Circus

MUSICAL



THE LIEUTENANT OF INISHMORE

PLAY

Who knocked Mad Padraic's cat over on a lonely road on the island of Inishmore and was it an accident? He'll want to know when he gets back from a stint of torture and chip-shop bombing in Northern Ireland: he loves that cat more than life itself. Aidan Turner (Poldark) stars in this hilarious, acute observation of violence in contemporary culture.

SCHEDULE: Monday – Saturday. Dark Sunday.

From 23 Jun to 8 Sep 18

VENUE: Noel Coward Theatre, St. Martin's Lane, WC2 Nearest Tube: Leicester Square



THE LION KING

MUSICAL

Set against the majesty of the Serengeti Plains and to the evocative rhythms of Africa, Disney's beloved film has been transformed into a spectacular theatrical experience that explodes with glorious colours, stunning effects and enchanting music. At its heart is the powerful and moving story of Simba, and his epic journey from wide-eyed cub to his destined role as the King of the Pridelands.

SCHEDULE: Tuesday – Sunday. Dark Monday.

Until 10 Feb 18

VENUE: Lyceum Theatre, Wellington Street, WC2 Nearest Tube: Covent Garden



LITTLE SHOP OF HORRORS

MUSICAL

A thrilling new production of the classic rock horror musical. On Skid Row, flower shop assistant Seymour discovers a mysterious new plant with killer potential. Will his newfound fame and fortune win the attention of kind, sweet, delicate Audrey? Can he finally break free and be happy...whatever the consequences?

SCHEDULE: Monday – Saturday. Dark Sunday.

From 3 Aug to 15 Sep 18

VENUE: Regent's Park Open Air Theatre, NW1 Nearest Tube: Baker Street



MAMMA MIA!

MUSICAL

Set on a Greek island paradise, a story of love, friendship and identity is cleverly told through the timeless songs of Abba, including "Dancing Queen", "Take A Chance On Me" and "Super Trouper". Sophie's quest to discover the father she's never known brings her mother face to face with three men from her distant romantic past on the eve of a wedding they'll never forget!

SCHEDULE: Monday – Saturday. Dark Sunday.

Until 2 Mar 19

VENUE: Novello Theatre, Aldwych, WC2 Nearest Tube: Covent Garden



MATILDA THE MUSICAL

MUSICAL

Matilda The Musical is the multi-award winning musical from the Royal Shakespeare Company, inspired by the beloved book by the incomparable Roald Dahl. With book by Dennis Kelly and original songs by Tim Minchin, Matilda The Musical tells the tale of an extraordinary girl who is determined to change her own story, even if it means being a little bit naughty...

SCHEDULE: Tuesday – Sunday. Dark Monday.

Until 20 Oct 19

VENUE: Cambridge Theatre, Earlham Street, WC2H Nearest Tube: Covent Garden



THE MODERATE SOPRANO

PLAY

The two great passions in John Christie's life were opera and a beautiful young soprano, Audrey Mildmay, with whom he was completely smitten. David Hare's new play of the birth of Glyndebourne, is the story of an intense love affair and the unrelenting search for artistic excellence in the face of searing scrutiny, sacrifice and the impending Second World War.

SCHEDULE: Monday – Saturday. Dark Sunday.

Until 30 Jun 18

VENUE: Duke of York's Theatre, St. Martin's Ln, WC2 Nearest Tube: Piccadilly Circus



A MONSTER CALLS

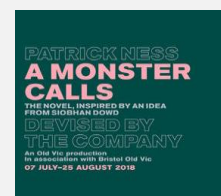
PLAY

A monster has come walking. It's come to tell thirteen year old Conor tales from when it walked before. And when it's finished, Conor must tell his own story and face his deepest fears. Based on Patrick Ness' piercing novel, which was a bestseller with children and adults alike with its dazzling insight into love, loss, and healing.

SCHEDULE: Monday – Saturday. Dark Sunday.

From 12 Jul to 25 Aug 18

VENUE: Old Vic Theatre, The Cut, SE1 Nearest Tube: Waterloo



MOTOWN THE MUSICAL

MUSICAL

Motown founder Berry Gordy went from featherweight boxer to heavyweight music mogul, discovering and launching the careers of Diana Ross and the Supremes, Michael Jackson and the Jackson 5, Stevie Wonder, Smokey Robinson and the Miracles, Marvin Gaye and many more. Featuring an 18-piece orchestra playing 50 Motown tracks, Motown The Musical is a musical sensation with real soul.

SCHEDULE: Monday – Saturday. Dark Sunday.

Until 5 Jan 19

VENUE: Shaftesbury Theatre, Shaftesbury Ave., WC2 Nearest Tube: Tottenham Ct Rd.



THE MOUSETRAP

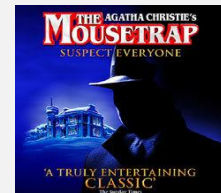
PLAY

Agatha Christie's legendary production has kept audiences guessing for over six decades. A group of people at a country guest house in Monkswell Manor. Cut off by the snow, they discover there is a murderer in their midst. Who can it be? One by one the suspicious characters reveal their sordid pasts until at the last, nerve-shredding moment the identity and the motive are finally revealed...

SCHEDULE: Monday – Saturday. Dark Sunday.

Until 5 Jan 29

VENUE: St Martin's Theatre, West Street, WC2 Nearest Tube: Leicester Square



THE PHANTOM OF THE OPERA

MUSICAL

Far beneath the majesty and splendour of the Paris Opera House, the love the Phantom holds for his beautiful protégée Christine Daaé is so strong that even her heart cannot resist. Andrew Lloyd Webber's mesmerising and unforgettable score, and the jaw-dropping scenery and breathtaking special effects, magically bring to life the legendary love story.

SCHEDULE: Monday – Saturday. Dark Sunday.

Until 2 Mar 19

VENUE: Her Majesty's Theatre, Haymarket, SW1Y Nearest Tube: Piccadilly Circus



PRESSURE

PLAY

D-Day, June 1944. The Allied forces led by General Eisenhower are poised to launch. 350,000 lives at stake and the decision of whether or not to attack comes down to the most important weather forecast of all time. Olivier Award-winner David Haig plays Scottish meteorologist, Group Captain James Stagg, in this true story and critical smash hit.

SCHEDULE: Monday – Saturday. Dark Sunday.

From 6 Jun to 1 Sep 18

VENUE: Ambassadors Theatre, West Street, WC2 Nearest Tube: Leicester Square



THE PLAY THAT GOES WRONG

COMEDY

This 2015 Olivier Award Winner for Best New Comedy is guaranteed to leave you aching with laughter! The Cornley Polytechnic Drama Society are putting on a 1920s murder mystery, but as the title suggests, everything that can go wrong... does! The accident-prone thespians battle against all odds to make it through to their final curtain call, with hilarious consequences!

SCHEDULE: Monday – Saturday. Dark Sunday.

Until 7 Apr 18

VENUE: Duchess Theatre, Catherine Street, WC2 Nearest Tube: Covent Garden



QUIZ

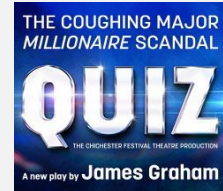
Is Quiz... A) A new play by acclaimed writer James Graham B) A provocative re-examination of the conviction of Charles Ingram, 'the coughing Major', for cheating, following his appearance on Who Wants To Be A Millionaire? C) A hilarious celebration of the great tradition of the British quiz show? D) A razor-sharp analysis of the 21st century's dangerous new attitude to truth and lies? Answer: You decide.

SCHEDULE: Monday – Saturday. Dark Sunday.

Until 16 Jun 18

VENUE: Noel Coward Theatre, St. Martin's Lane, WC2 Nearest Tube: Leicester Square

PLAY



RED

The Michael Grandage Company presents its award-winning revival of RED, starring Alfred Molina (Art) and Alfred Enoch (How To Get Away With Murder). Under the watchful gaze of his young assistant, and the threatening presence of a new generation of artists, Mark Rothko takes on his greatest challenge yet: to create a definitive work for an extraordinary setting.

SCHEDULE: Monday – Saturday. Dark Sunday.

Until 28 Jul 18

VENUE: Wyndham's Theatre, Charing Cross Rd, WC2H Nearest Tube: Leicester Square

PLAY



SCHOOL OF ROCK

School of Rock, the hit Broadway musical from Andrew Lloyd Webber, is now rocking the West End! Dewey Finn, a failed, wannabe rock star, decides to earn an extra bit of cash by posing as a supply teacher at a prestigious prep school. There he turns a class of straight-A pupils into a guitar-shredding, bass-slapping, mind-blowing rock band. School of Rock is a musical treat for all ages!

SCHEDULE: Wednesday – Monday. Dark Tuesday.

Until 13 Jan 19

VENUE: Gillian Lynne Theatre, Drury Lane, WC2

Nearest Tube: Holborn / Covent Garden

MUSICAL



SNOW WHITE

From the same team behind last year's Olivier Award winning pantomime, Snow White will feature all the sparkle, scale and spectacle London has come to expect from the West End's most lavish festive production in a show packed full of laughter, music, special effects and theatrical magic. Starring Dawn French, Julian Clary, and more!

SCHEDULE: Performance schedule varies, please ask.

From 8 Dec to 13 Jan 18

VENUE: London Palladium, Argyll Street, W1F

Nearest Tube: Oxford Circus

EVENT



SPAMILTON

Hamilton? Very few tickets available. Spamilton? Hamilton and much more. Tickets still available...Described as "smart, silly and convulsively funny" by the New York Times, it not only takes target at Broadway's biggest export but also a host of the theatre world's biggest names and musicals. In the words Lin Manuel Miranda, "I laughed my brains out".

SCHEDULE: Tuesday – Sunday. Dark Monday.

From 12 Jul to 8 Sep 18

VENUE: Menier Chocolate Factory, Southwark St, SE1 Nearest Tube: London Bridge

MUSICAL



STRICTLY BALLROOM

Based on Baz Luhrmann's hit movie, this musical production is a kaleidoscope of colour and fun. Maverick championship ballroom dancer Scott defies all the rules of competition to follow his heart and teams up with left-footed partner Fran to win his way. Includes the film's classic break-into-song numbers Love is in the Air, Perhaps Perhaps Perhaps and Time After Time.

SCHEDULE: Monday – Saturday. Dark Sunday.

Until 20 Oct 19

VENUE: Piccadilly Theatre, Denman Street, W1

Nearest Tube: Piccadilly Circus

MUSICAL



THRILLER - LIVE

MUSICAL

The wonderful career of the world's greatest entertainer - Michael Jackson - is celebrated like never before, with this amazing show, featuring a full company of singers, dancers and live band. Boogie on down as the cast belts out song after song from the early Motown and Jackson 5 days right up to the solo successes with dance sequences that are simply breath-taking.

SCHEDULE: Tuesday – Sunday. Dark Monday.

Until 7 Apr 19

VENUE: Lyric Theatre, Shaftesbury Avenue, W1

Nearest Tube: Piccadilly Circus



TINA - THE TINA TURNER MUSICAL

MUSICAL

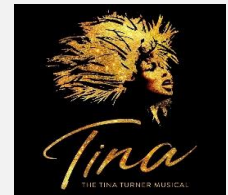
From humble beginnings in Nutbush, Tennessee, to her transformation into the global Queen of Rock 'n' Roll, Tina Turner (Adrienne Warren) didn't just break the rules, she rewrote them. This new stage musical featuring her much-loved songs, reveals the untold story of a woman who dared to defy the bounds of her age, gender and race.

SCHEDULE: Monday – Saturday. Dark Sunday.

Until 16 Feb 19

VENUE: Aldwych Theatre, Aldwych, WC2B 4DF

Nearest Tube: Drury Lane



WICKED

MUSICAL

Based on the acclaimed novel that ingeniously re-imagined the stories and characters in 'The Wonderful Wizard of Oz', Wicked tells the incredible untold story of an unlikely but profound friendship between two sorcery students. Their extraordinary adventures in Oz will ultimately see them fulfil their destinies as Glinda The Good and the Wicked Witch of the West.

SCHEDULE: Monday – Saturday. Dark Sunday.

Until 25 May 19

VENUE: Apollo Victoria Theatre, Wilton Road, SW1

Nearest Tube: Victoria



WITNESS FOR THE PROSECUTION

PLAY

Step inside the magnificent surroundings of The Chamber at London County Hall and experience the intensity and drama of Agatha Christie's gripping story of justice, passion and betrayal in a unique courtroom setting. Leonard Vole is accused of murdering a widow to inherit her wealth. Don't miss this landmark stage production on London's Southbank. See you in court.

SCHEDULE: Tuesday – Sunday. Dark Monday.

Until 31 Mar 19

VENUE: London Country Hall, Belvedere Road, SE1

Nearest Tube: Waterloo



THE WOMAN IN BLACK

PLAY

Since 1989, millions of theatre-goers have lived to tell the tale of one of the most exciting, spooky, gripping and successful theatre events ever staged. The Woman In Black is a gripping theatrical exploration of terror, 'a masterpiece' (The Guardian) that's been thrilling audiences of all ages with its unique blend of suspense, drama and bold stagecraft.

SCHEDULE: Tuesday – Saturday. Dark Sunday.

Until 26 Jan 19

VENUE: Fortune Theatre, Russell Street, WC2

Nearest Tube: Covent Garden



YOUNG FRANKENSTEIN

MUSICAL

Legendary filmmaker and comedian Mel Brooks brings his classic monster musical comedy Young Frankenstein to life on stage in an all-singing, all-dancing musical collaboration with Tony-award winning Broadway director and choreographer Susan Stroman, based on the hilarious Oscar-nominated smash hit movie that starred Gene Wilder.

SCHEDULE: Monday – Saturday. Dark Sunday.

Until 25 Aug 19

VENUE: Garrick Theatre, Charing Cross Rd., WC2

Nearest Tube: Leicester Square

