

WHAT'S ON

LONDON 2019 - 2020



LONDON THEATRE AND ENTERTAINMENT

& JULIET

This irreverent and fun-loving new musical asks: what if Juliet's famous ending was really just her beginning? What if she decided to choose her own fate? This is Juliet's story now! Soaring with pop anthems including ...Baby One More Time, Everybody (Backstreet's Back), Love Me Like You Do and Can't Feel My Face, & Juliet is a riotous blast of fun and glorious music.

SCHEDULE: Monday – Saturday. Dark Sunday.

VENUE: Shaftesbury Theatre, Shaftesbury Ave., WC2 Now - 28 Mar 20

MUSICAL



9 TO 5

Tumble outta' bed and stumble to Dolly Parton's rip-roaring West End musical! Doralee, Violet and Judy are three workmates pushed to boiling point by their sexist and egotistical boss. Concocting a plan to kidnap and turn the tables on their despicable supervisor, will the girls manage to reform their office - or will events unravel when the CEO pays an unexpected visit?

SCHEDULE: Monday – Saturday. Dark Sunday.

VENUE: Savoy Theatre, The Strand, WC2 Now - 23 May 20

MUSICAL



AMÉLIE

After captivating audiences across the UK, Amélie comes to the West End. Amélie secretly improvises small, but extraordinary acts of kindness discovering the possibilities around every corner and bringing happiness to those she encounters. When a chance at love comes her way, Amélie realises that to find her own contentment she'll have to risk everything and say what's in her heart.

SCHEDULE: Monday – Saturday. Dark Sunday.

VENUE: The Other Palace, Palace Street, SW1E 29 Nov - 1 Feb 20

MUSICAL



AS YOU LIKE IT

All the world really is a stage in Royal Shakespeare Company's joyous and imaginative version of Shakespeare's madcap romantic comedy. Rosalind is banished, and with her best friend Celia by her side, she journeys into exile. But not before catching the eye of love-struck Orlando, who is also forced from The Court into the dappled Forest of Arden. What ensues is a riotous adventure where barriers are broken down and all can discover their deeper selves.

SCHEDULE: In repertory from 26 October 26 to 18 Jan 20

VENUE: Barbican Theatre, Silk Street, EC2

COMEDY



BE MORE CHILL

After captivating audiences across the UK, Amélie comes to the West End. Amélie secretly improvises small, but extraordinary acts of kindness discovering the possibilities around every corner and bringing happiness to those she encounters. When a chance at love comes her way, Amélie realises that to find her own contentment she'll have to risk everything and say what's in her heart.

SCHEDULE: Tuesday – Sunday. Dark Monday.

VENUE: The Other Palace, Palace Street, SW1E 12 Feb 20 - 3 May 20

MUSICAL



BIG THE MUSICAL

Experience the fun-filled family spectacular BIG the Musical this autumn. Based on the smash-hit movie starring Tom Hanks, Josh Baskin is twelve and life sucks, until one night at a carnival his wish to be big is granted. Now, trapped in an adult body in a grown-up world, he's asking: is being BIG all it's cracked up to be? If you make a wish this autumn - make sure it's a BIG one.

SCHEDULE: Monday – Saturday. Dark Sunday.

VENUE: Dominion Theatre, Tottenham Court Rd, W1P Now - 2 Nov 20

MUSICAL



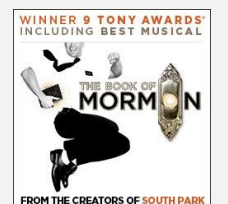
THE BOOK OF MORMON

Winner of 4 Oliviers and 9 Tony Awards, including Best Musical! Vogue says "it's the funniest musical of all time." The New York Times says "it's the best musical of this century." It's the Broadway phenomenon from 'South Park' creators Trey Parker and Matt Stone and 'Avenue Q' co-creator Robert Lopez. Time Out New York calls it "musical comedy heaven."

SCHEDULE: Monday – Saturday. Dark Sunday.

VENUE: Prince of Wales Theatre, Coventry Street, W1 Now - 8 Feb 20

MUSICAL



Call Reservations on 09 444 2298
for latest availability & prices.



A CHRISTMAS CAROL

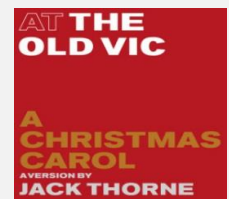
Matthew Warchus' big-hearted, smash hit production of Charles Dickens' immortal classic returns to The Old Vic, joyously adapted for the stage by Jack Thorne (Harry Potter and the Cursed Child). The Old Vic's A Christmas Carol fills the auditorium to the brim with mince pies, music and merriment. A unique staging immerses the audience in the uplifting story.

SCHEDULE: Monday – Saturday. Dark Sunday.

VENUE: Old Vic Theatre, The Cut, SE1

23 Nov - 18 Jan 20

PLAY



COME FROM AWAY

Winner! Four 2019 Olivier Awards, including Best New Musical! This joyous new musical shares the incredible real-life story of the 7,000 air passengers from all over the world grounded in Canada during the wake of 9/11, and the small community of Newfoundland that invited these 'come from aways' into their lives. As uneasiness turned into trust and music soared into the night, their stories became a celebration of hope, humanity and unity.

SCHEDULE: Monday – Saturday. Dark Sunday.

VENUE: Phoenix Theatre, Charing Cross Road, WC2H

Now - 23 May 20

MUSICAL



THE COMEDY ABOUT A BANK ROBBERY

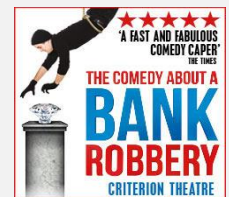
One giant diamond. Eight incompetent crooks. And a security guard asleep on the job. What could possibly go right? Written by and starring the Mischief Theatre Company (who brought you the 2015 Olivier award-winning Best New Comedy "The Play That Goes Wrong"), be entertained by their unique brand of humour in this hilarious new show. It would be criminal to miss it.

SCHEDULE: Tuesday – Sunday. Dark Monday.

VENUE: Criterion Theatre, Piccadilly Circus, W1

Now - 1 Nov 20

COMEDY



CYRANO DE BERGERAC

James McAvooy returns to the West End in an inventive new adaptation of Edmond Rostand's masterwork by Martin Crimp. Fierce with a pen and notorious in combat, Cyrano almost has it all - if only he could win the heart of his true love. There's just one big problem: he has a nose as huge as his heart. Will a society engulfed by narcissism get the better of De Bergerac - or can his mastery of language set Roxane's world alight?

SCHEDULE: Tuesday – Saturday. Dark Sun-Mon.

VENUE: Playhouse Theatre, Northumberland, WC2N

27 Nov - 27 Feb 20

MUSICAL



A DAY IN THE DEATH OF JOE EGG

Toby Stephens and Claire Skinner make their long-awaited returns to the West End stage in Peter Nichols' frank and moving masterpiece, written in the 1960s but still resonant. Bri and Sheila have been struggling to care for their disabled 10-year old daughter Josephine ever since she was born. Nicknaming her "Joe Egg", they lose themselves in fantasy games and black humour to help cope with the struggle of their daily reality.

SCHEDULE: Monday – Saturday. Dark Sunday.

VENUE: Trafalgar Studios, Whitehall, SW1

Now - 30 Nov 19

PLAY



DEAR EVAN HANSEN

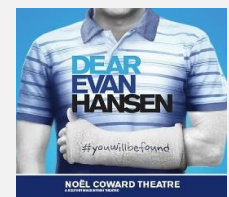
A letter that was never meant to be seen, a lie that was never meant to be told, a life he never dreamed he could have. Evan Hansen is about to get the one thing he's always wanted: a chance to finally fit in. From the Tony®, Oscar and Golden Globe-winning songwriting team Benj Pasek and Justin Paul (The Greatest Showman, La La Land), DEAR EVAN HANSEN is a new musical about life and the way we live it.

SCHEDULE: Monday – Saturday. Dark Sunday.

VENUE: Noel Coward Theatre, St. Martin's Lane, WC2

Now - 2 May 20

MUSICAL



DEATH OF A SALESMAN

Following a sold out run at the Young Vic theatre, the smash hit, critically acclaimed production of Arthur Miller's masterpiece transfers to the Piccadilly Theatre for 10 weeks only. Wendell Pierce (The Wire, Suits, Selma) makes his West End stage debut as Willy Loman, with Olivier Award-winning Sharon D. Clarke as Linda Loman, directed by Tony and Oliver Award winner Marianne Elliott.

SCHEDULE: Monday – Saturday. Dark Sunday.

VENUE: Piccadilly Theatre, Denman Street, W1

Now - 4 Jan 20

PLAY



Call Reservations on 09 444 2298
for latest availability & prices.



THE DOCTOR

Juliet Stevenson stars in Robert Icke's blistering production of *The Doctor*, which received critical acclaim at the Almeida Theatre. Set in a London hospital, the play focuses on Professor Ruth Woolf, a senior physician who is treating a young patient with sepsis when a priest is sent by the girl's parents to deliver the last rites. This poses a huge moral dilemma for the doctor, which erupts into a national scandal.

SCHEDULE: Monday – Saturday. Dark Sunday.

VENUE: Duke of York's Theatre, St. Martin's Ln, WC2 20 Apr 20 - 11 Jul 20

PLAY



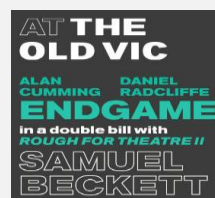
ENDGAME

Alan Cumming and Daniel Radcliffe star in Samuel Beckett's macabre comedy in which hope and cruelty are the last things to die. Interrupted only by the nostalgic musings of an old tyrant's ancient, dustbin-dwelling parents, this bleakly funny double act cling stubbornly to their routine of casual savagery and mutual dependence. Presented in a double bill with Beckett's *Rough for Theatre II*, performed by members of the company.

SCHEDULE: Monday – Saturday. Dark Sunday.

VENUE: Old Vic Theatre, The Cut, SE1 27 Jan 20 - 28 Mar 20

PLAY



EVERYBODY'S TALKING ABOUT JAMIE

Jamie New is sixteen and lives on a council estate in Sheffield. Jamie doesn't quite fit in. Is terrified about the future. Is going to be a sensation. Supported by his brilliant loving mum and surrounded by his friends, Jamie overcomes prejudice, beats the bullies and steps out of the darkness, into the spotlight. Fearless, funny, fabulous - a coming-of-age story with a twist!

SCHEDULE: Monday – Saturday. Dark Sunday.

VENUE: Apollo Theatre, Shaftesbury Ave, W1D Now - 29 Aug 20

MUSICAL



FALSETTOS

William Finn and James Lapine's groundbreaking, Tony Award-winning musical revolves around the life of a charming, intelligent, neurotic gay man named Marvin, his wife, lover, about-to-be-Bar-Mitzvahed son, their psychiatrist, and the lesbians next door. It's a hilarious and achingly poignant look at the infinite possibilities that make up a modern family...and a beautiful reminder that love can tell a million stories.

SCHEDULE: Monday – Saturday. Dark Sunday.

VENUE: The Other Palace, Palace Street, SW1E Now - 23 Nov 19

MUSICAL



FIDDLER ON THE ROOF

In Trevor Nunn's exuberant revival of the classic Broadway musical, old traditions and young love collide in this joyous and timely celebration of life. Featuring the iconic score including Tradition, Matchmaker, Matchmaker, Sunrise, Sunset and If I Were a Rich Man, and packed with Jerome Robbins' original Tony award-winning choreography.

SCHEDULE: Tuesday – Saturday. Dark Sun-Mon. Through November 2.

VENUE: Playhouse Theatre, Northumberland, WC2N Now - 2 Nov 19

MUSICAL



GHOST STORIES

There's something dark lurking in the theatre. Enter a nightmarish world, full of thrilling twists and turns, where all your deepest fears and disturbing thoughts are imagined live on stage. A fully sensory and electrifying encounter, *Ghost Stories* is the ultimate twisted love-letter to horror and an edge-of-your-seat theatrical experience like no other. Be it phantoms, poltergeists or simply a 'bump in the night', let's play a game with fear.

SCHEDULE: Monday – Saturday. Dark Sunday.

VENUE: Ambassadors Theatre, West Street, WC2 Now - 4 Jan 20

PLAY



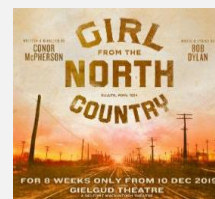
GIRL FROM THE NORTH COUNTRY

Duluth, Minnesota in the midst of the Great Depression. A family adrift, their future on a knife edge. Lost and lonely people drifting through rooms of their guesthouse. But Nick Laine thinks he's seen a way out...An electrifying new work from esteemed playwright Conor McPherson along with classic songs from Bob Dylan, returns to the West End following its run at the Noel Coward Theatre.

SCHEDULE: Monday – Saturday. Dark Sunday.

VENUE: Gielgud Theatre, Shaftesbury Road, W1D 1 Dec 19 - 1 Feb 20

MUSICAL



Call Reservations on 09 444 2298
for latest availability & prices.



THE GREAT GATSBY

EVENT

"The honour would be entirely mine if you would attend my little party." It's the roaring twenties – an era of bootleg liquor, red hot jazz and hedonistic pleasures. Jay Gatsby has invited you to one of his infamous parties and that's not an invite you want to turn down. Step into a heart-racing immersive adaptation of F Scott Fitzgerald's seminal jazz-age novel.

SCHEDULE: Wednesday – Sunday. Dark Monday – Tuesday.

VENUE: Gatsby's Mansion, Davies Street, W1K Now - 31 May



GROAN UPS

COMEDY

Are we the same people at 30 as we were at 13? Does school life determine our future? Do we ever grow out of our school crush? Playing an unruly classroom of kids and anarchic high school teenagers, through to the aches and pains of adulthood, the original Mischief company (The Play That Goes Wrong) are back in the West End with their first newest play since 2016.

SCHEDULE: Monday – Saturday. Dark Sunday.

VENUE: Vaudeville Theatre, Strand, WC2R Now - 1 Dec 20



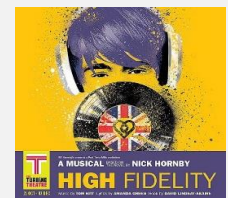
HIGH FIDELITY

MUSICAL

Rob is the thirty-something owner of a London record shop who's mastered the art of finding rare vinyl and losing girlfriends. Laura just dumped him, and Rob is totally moving on. Hopefully. Well, there's a chance it could still work out! Could Laura actually be "the one?" Might this turn out to be one of the Top 5 Most Romantic Comebacks Ever?! Based n the British novel by Nick Hornby.

SCHEDULE: Tuesday – Sunday. Dark Monday.

VENUE: The Turbine Theatre, Arches Lane, SW11 Now - 6 Dec 19



IAN MCKELLEN ON STAGE

EVENT

To celebrate his 80th Birthday, Sir Ian McKellen brings his one-man show "Shakespeare, Tolkien, Others and You" to the stage with stories and anecdotes from his illustrious career both on stage and screen. He'll reprise extracts from his most-renowned performances, which include Shakespeare's Lear and Tolkien's Gandalf from Lord of the Rings, while engaging with audience members to help craft the show.

SCHEDULE: Tuesday – Sunday. Dark Monday.

VENUE: Harold Pinter Theatre, Panton Street, SW1Y Now - 5 Jan 20



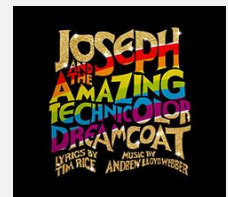
JOSEPH AND THE AMAZING TECHNICOLOR DREAMCOAT

MUSICAL

The new, smash hit production of Joseph returns to the iconic London Palladium, following its triumphant season this year. Joseph enjoyed a completely sold out season this year, with audiences giving the new production nightly standing ovations. Critics were also unanimous in their acclaim for the legendary musical - the first major collaboration by Andrew Lloyd Webber and Tim Rice – as it returned to the London Palladium.

SCHEDULE: Monday – Saturday. Dark Sunday.

VENUE: London Palladium, Argyll Street, W1F 2 Jul 20 - 6 Sep 20



KUNENE AND THE KING

PLAY

South Africa, 2019. Twenty-five years since the first post-apartheid democratic elections, two men from contrasting walks of life are thrust together to reflect on a quarter century of change. Jack Morris has seemingly little in common with his at-home nurse Lunga Kunene, but the two men soon discover their shared passion for Shakespeare, which ignites this 'rich, raw and shattering head-to-head' (The Times).

SCHEDULE: Monday – Saturday. Dark Sunday.

VENUE: Ambassadors Theatre, West Street, WC2 24 Jan 20 - 28 Mar 28



LEOPOLDSTADT

PLAY

Vienna in 1900 was the most vibrant city in Europe, humming with artistic and intellectual excitement and a genius for enjoying life. A tenth of the population were Jews. A generation earlier they had been granted full civil rights by the Emperor, Franz Josef. It was not to last, and millions rediscovered what it means to be Jewish in the first half of the 20th century. Tom Stoppard's passionate drama of love, family and endurance.

SCHEDULE: Monday – Saturday. Dark Sunday.

VENUE: Wyndham's Theatre, Charing Cross Rd, WC2H 25 Jan - 16 May



Call Reservations on 09 444 2298
for latest availability & prices.



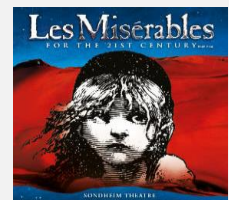
LES MISÉRABLES

MUSICAL

Cameron Mackintosh's acclaimed brilliant new staging of Boublil and Schönberg's classic musical has taken the world by storm and has been hailed "Les Mis for the 21st Century". The magnificent score of Les Misérables includes I Dreamed a Dream, On My Own, Bring Him Home, One Day More, Master Of The House and many more. Storm the barricades for a ticket to one of the world's most popular musicals.

SCHEDULE: Monday – Saturday. Dark Sunday.

VENUE: Sondheim Theatre, Shaftesbury Avenue, W1 Now - 4 Apr 20



LES MISÉRABLES: THE STAGED CONCERT

MUSICAL

Michael Ball and Alfie Boe star in a spectacular and intimate staging of the legendary concert previously seen in London at the Royal Albert Hall and The O2. With a cast and orchestra of over 65, featuring the songs I Dreamed A Dream, Bring Him Home, One Day More and On My Own, this all-star staged concert is not to be missed.

SCHEDULE: Monday – Saturday. Dark Sunday.

VENUE: Gielgud Theatre, Shaftesbury Road, W1D Now to 30 Nov 19



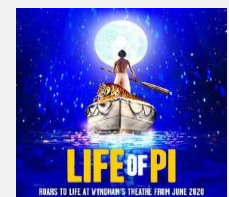
LIFE OF PI

PLAY

After a cargo ship sinks in the middle of the vast Pacific Ocean, there are five survivors stranded on a lifeboat - a hyena, a zebra, an orangutan, a Royal Bengal tiger, and a sixteen year-old boy named Pi. Time is against them, nature is harsh, who will survive? Based on one of the most extraordinary and best-loved works of fiction, this smash hit adaptation of an epic journey of endurance and hope features breath-taking puppetry and state-of-the-art visuals.

SCHEDULE: Wednesday – Monday. Dark Tuesday.

VENUE: Wyndham's Theatre, Charing Cross Rd, WC2H 22 Jul 20 - 4 Oct 20



THE LION KING

MUSICAL

Set against the majesty of the Serengeti Plains and to the evocative rhythms of Africa, Disney's beloved film has been transformed into a spectacular theatrical experience that explodes with glorious colours, stunning effects and enchanting music. At its heart is the powerful and moving story of Simba, and his epic journey from wide-eyed cub to his destined role as the King of the Pridelands.

SCHEDULE: Tuesday – Sunday. Dark Monday.

VENUE: Lyceum Theatre, Wellington Street, WC2 Now - 30 May 20



THE LION, THE WITCH AND THE WARDROBE

PLAY

Step through the wardrobe this winter into the magical kingdom of Narnia for the most mystical of adventures in a faraway land. Join Lucy, Edmund, Susan and Peter as they wave goodbye to wartime Britain and say hello to a talking Faun, an unforgettable Lion and the coldest, cruellest White Witch.

SCHEDULE: Tuesday – Sunday. Dark Monday.

VENUE: The Bridge Theatre, Potters Field Park, SE1 Now - 2 Feb 20



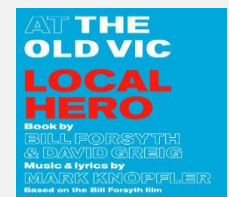
LOCAL HERO

MUSICAL

Ambitious Texan oil executive Mac MacIntyre arrives in Scotland on a mission to buy a small seaside village and replace it with a refinery. It's the deal of a lifetime, but Mac soon finds that putting a price on this beautiful spot is more complicated than he bargained for. Before the locals get rich, they must decide what their home is worth. Adapted from the film with music and songs by Mark Knopfler.

SCHEDULE: Monday – Saturday. Dark Sunday.

VENUE: Old Vic Theatre, The Cut, SE1 18 Jun 20 - 5 Sep 20



MAGIC MIKE LIVE!

EVENT

The Channing Tatum crafted, 360-degree dance and acrobatic spectacular is made for a woman's gaze but directed at a woman's heart. Equal parts empowering and exhilarating, whether you're looking for the perfect date night or an unforgettable girls night out, don't miss the show that the Metro called "Red-hot magic!" and The Sun calls, "... the sexiest, steamiest show in town!".

SCHEDULE: Tuesday – Sunday. Dark Monday.

VENUE: The Theatre at Hippodrome Casino, WC2H Now - 15 Dec 19



Call Reservations on 09 444 2298
for latest availability & prices.



MAGIC GOES WRONG

COMEDY

The creators of The Play That Goes Wrong and The Comedy About A Bank Robbery have collaborated with Penn & Teller, whose successful double act has seen rise to become one of the world's biggest magic acts selling out venues in London and the US. It is the next 'Goes Wrong' comedy in the West End after Peter Pan Goes Wrong and The Play That Goes Wrong!



SCHEDULE: Monday – Saturday. Dark Sunday.

VENUE: Vaudeville Theatre, Strand, WC2R

14 Dec 19 - 15 Mar 20

MAMMA MIA!

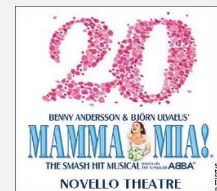
MUSICAL

Join the fun as the world's favourite feel-good musical celebrates its twentieth anniversary in London's West End. Since premiering there in 1999, the irresistible smash-hit has become a global phenomenon that's captured the hearts of millions around the globe. It's the sunny, funny tale of a mother, a daughter and three possible dads on a Greek island idyll, unfolding to the magic of ABBA's timeless pop masterpieces.

SCHEDULE: Monday – Saturday. Dark Sunday.

VENUE: Novello Theatre, Aldwych, WC2

Now - 19 Sep 20



MAMMA MIA! THE PARTY

EVENT

You've seen the musical. You've watched the films. Now you can experience MAMMA MIA! THE PARTY. Meet taverna owner Nikos and his family as their story unfolds in a glorious night of song, dance and celebration. Featuring your favourite ABBA songs performed by actors and musicians all around you, soak up the island atmosphere and feast on mouth-watering Mediterranean food & drink!

SCHEDULE: Wednesday – Monday. Dark Tuesday.

VENUE: The O2, Peninsula Square, SE10

Now - 16 Feb 20



THE MAN IN THE WHITE SUIT

COMEDY

In this fast-moving Ealing comedy, Sidney Stratton (Stephen Mangan), invents a fabric that never gets dirty and never wears out, manufacturers and trades unions are terrified by the threat it poses to their industry and their jobs. Only Daphne (Kara Tointon) the mill owner's daughter, shows Sidney any support as the bosses and workers chase the Man in the White Suit determined to destroy them both.

SCHEDULE: Monday – Saturday. Dark Sunday.

VENUE: Wyndham's Theatre, Charing Cross Rd, WC2H Now - 11 Jan 20



MARY POPPINS

MUSICAL

The multi award-winning musical returns to the West End this October! With a fantastic score that includes Supercalifragilisticexpialidocious, A Spoonful of Sugar, Let's Go Fly a Kite and Feed The Birds, the magical story has been triumphantly and spectacularly brought to the stage with dazzling choreography, incredible effects and unforgettable songs.

SCHEDULE: Monday – Saturday. Dark Sunday.

VENUE: Prince Edward Theatre, Old Compton St, W1 now - 3 May 20



MATILDA THE MUSICAL

MUSICAL

Matilda The Musical is the multi-award winning musical from the Royal Shakespeare Company, inspired by the beloved book by the incomparable Roald Dahl. With book by Dennis Kelly and original songs by Tim Minchin, Matilda The Musical tells the tale of an extraordinary girl who is determined to change her own story, even if it means being a little bit naughty...

SCHEDULE: Tuesday – Sunday. Dark Monday.

VENUE: Cambridge Theatre, Earlham Street, WC2H

Now - 20 Dec 20



MEASURE FOR MEASURE

PLAY

Royal Shakespeare Company's Artistic Director Gregory Doran directs this new production of Shakespeare's play written in the early 1600s, but feels even more urgent today. When a novice nun is compromised by a corrupt official who offers to save her brother from execution in return for sex, she has no idea where to turn for help. When she threatens to expose him, he tells her that nobody would believe her.

SCHEDULE: In repertory from 12 Nov 19 to 16 Jan 20

VENUE: Barbican Theatre, Silk Street, EC2



Call Reservations on 09 444 2298
for latest availability & prices.



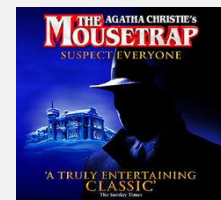
THE MOUSETRAP

PLAY

Agatha Christie's legendary production has kept audiences guessing for over six decades. A group of people at a country guest house in Monkswell Manor. Cut off by the snow, they discover there is a murderer in their midst. Who can it be? One by one the suspicious characters reveal their sordid pasts until at the last, nerve-shredding moment the identity and the motive are finally revealed...

SCHEDULE: Monday – Saturday. Dark Sunday.

VENUE: St Martin's Theatre, West Street, WC2 Now - 20 Mar 20



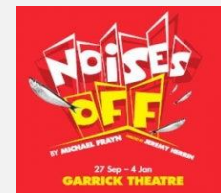
NOISES OFF

COMEDY

Michael Frayn's hilarious comedy returns to the West End! Set during the rehearsals, backstage during a performance, and then during a calamitous show, Noises Off chronicles the hilarious slapstick capers of a touring cast of a farcical fictitious play, Nothing On. As the cast get closer during the course of the tour, scandal and affair pushes them to breaking point, which boils over and spills onto the stage.

SCHEDULE: Monday – Saturday. Dark Sunday.

VENUE: Garrick Theatre, Charing Cross Rd., WC2 Now - 4 Jan 20



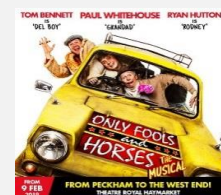
ONLY FOOLS AND HORSES

MUSICAL

The landmark, record-breaking and top-rated television series, written by the late, great John Sullivan, holds a special place in the hearts of the British public. Now John's son has teamed up with comedy giant Paul Whitehouse to write and produce a script and score to honour his father's legacy; recreating the iconic series into a brand-new, home-grown British Musical spectacular. Lovely Jubbly!

SCHEDULE: Monday – Saturday. Dark Sunday.

VENUE: Theatre Royal Haymarket, Haymarket, SW1Y Now - 8 Feb 20



OUR LADY OF KIBEHO

PLAY

In 1981 at Kibeho College in Rwanda, a young girl claimed to have seen a vision of the Virgin Mary who warned her of the unimaginable: Rwanda becoming hell on earth. She was ignored by her friends and scolded by her school but then another student saw the vision, and another, and the impossible appeared to be true. A vibrantly theatrical meditation on faith and everyday miracles, it was hailed "the most important play of the year" by The Wall Street Journal in its 2014 premiere.

SCHEDULE: Monday – Saturday. Dark Sunday.

VENUE: Theatre Royal Stratford East, Stratford, E15 Now - 10 Nov 20



THE PHANTOM OF THE OPERA

MUSICAL

Far beneath the majesty and splendour of the Paris Opera House, the love the Phantom holds for his beautiful protégée Christine Daaé is so strong that even her heart cannot resist. Andrew Lloyd Webber's mesmerising and unforgettable score, and the jaw-dropping scenery and breathtaking special effects, magically bring to life the legendary love story.

SCHEDULE: Monday – Saturday. Dark Sunday.

VENUE: Her Majesty's Theatre, Haymarket, SW1Y Now - 4 Apr 20



THE PLAY THAT GOES WRONG

COMEDY

This 2015 Olivier Award Winner for Best New Comedy is guaranteed to leave you aching with laughter! The Cornley Polytechnic Drama Society are putting on a 1920s murder mystery, but as the title suggests, everything that can go wrong... does! The accident-prone thespians battle against all odds to make it through to their final curtain call, with hilarious consequences!

SCHEDULE: Monday – Saturday. Dark Sunday.

VENUE: Duchess Theatre, Catherine Street, WC2 Now - 7 Mar 20



PRETTY WOMAN: THE MUSICAL

MUSICAL

One of Hollywood's most beloved romantic stories of all time is now coming to the West End! Experience the moments you love from the movie — and get to know these iconic characters in a whole new way — in this dazzlingly theatrical take on a love story for the ages. Featuring an original score by Grammy® winner Bryan Adams ("Summer of '69," "Everything I Do").

SCHEDULE: Monday – Saturday. Dark Sunday.

VENUE: Piccadilly Theatre, Denman Street, W1 14 Feb 20 - 2 Jan 21



Call Reservations on 09 444 2298
for latest availability & prices.



THE PRINCE OF EGYPT

MUSICAL

The DreamWorks animated motion picture is now a new stage musical, featuring music and lyrics by Stephen Schwartz. It will feature 10 brand new songs plus the hit from the film, including Whitney Houston and Mariah Carey's hit "When You Believe." It tells the story of Moses, who was born a child of Israel, and brought up in Egypt after he was found by Pharaoh's wife in a wicker basket floating on the Nile.

SCHEDULE: Monday – Saturday. Dark Sunday.

VENUE: Dominion Theatre, Tottenham Court Rd, W1P 5 Feb 20 - 12 Sep 20



SCHOOL OF ROCK

MUSICAL

School of Rock, the hit Broadway musical from Andrew Lloyd Webber, is now rocking the West End! Dewey Finn, a failed, wannabe rock star, decides to earn an extra bit of cash by posing as a supply teacher at a prestigious prep school. There he turns a class of straight-A pupils into a guitar-shredding, bass-slapping, mind-blowing rock band. School of Rock is a musical treat for all ages!

SCHEDULE: Wednesday – Monday. Dark Tuesday.

VENUE: Gillian Lynne Theatre, Drury Lane, WC2 Now - 5 Apr 20



SIX THE MUSICAL

MUSICAL

From Tudor Queens to Pop Princesses, the six wives of Henry VIII take to the mic to tell their tales, remixing five hundred years of historical heartbreak into a 75-minute celebration of 21st century girl power. These Queens may have green sleeves but their lipstick is rebellious red. A homegrown histo-remixed pop-concert musical by Toby Marlow and Lucy Moss!

SCHEDULE: Tuesday – Sunday. Dark Monday.

VENUE: Arts Theatre, 6-7 Great Newport St, WC2H Now - 5 Jul 20



SOHO CINDERS

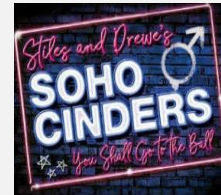
MUSICAL

When impoverished student Robbie becomes romantically involved with engaged London Mayoral candidate James Prince, his lap-dancing step-sisters become the least of his problems! James and Robbie's worlds collide, forcing them to fight for their own fairy-tale ending. Celebrating London's most colourful district and mixing politics, sex-scandals and true love, it's deliciously naughty musical update of the Cinderella story!

SCHEDULE: Monday – Saturday. Dark Sunday.

Through December 21.

VENUE: Charing Cross Theatre, The Arches, WC2N Now - 21 Dec 19



THE SON

PLAY

Nicolas is going through a difficult phase after his parents' divorce. He's listless, skipping school, lying and thinks that moving in with his father and his new family may help. A fresh start. When he doesn't settle there either, he decides that going back to his mother's may be the answer. When change feels like the only way to survive, what will he do when the options begin to run out?

SCHEDULE: Monday – Saturday. Dark Sunday.

VENUE: Duke of York's Theatre, St. Martin's Ln, WC2 Now - 10 Nov 19



THE TAMING OF THE SHREW

COMEDY

The ultimate battle of the sexes is turned on its head in Royal Shakespeare Company's 'deftly provocative and exuberantly entertaining' (The Times) production in which the 1590s are reimagined – with women in charge. In this radical take on Shakespeare's fierce and energetic comedy of gender, Baptista Minola is seeking to marry off her two sons, the sweet-tempered Bianco and the rebellious Katherine. Cue an explosive courtship and a keenly witty portrayal of hierarchy and

SCHEDULE: In repertory from 5 Nov 19 to 18 Jan 20.

VENUE: Barbican Theatre, Silk Street, EC2 Nearest Tube: Barbican



THRILLER - LIVE

MUSICAL

The wonderful career of the world's greatest entertainer - Michael Jackson - is celebrated like never before, with this amazing show, featuring a full company of singers, dancers and live band. Boogie on down as the cast belts out song after song from the early Motown and Jackson 5 days right up to the solo successes with dance sequences that are simply breath-taking.

SCHEDULE: Tuesday – Sunday. Dark Monday.

VENUE: Lyric Theatre, Shaftesbury Avenue, W1 Now - 16 Apr 20



Call Reservations on 09 444 2298
for latest availability & prices.



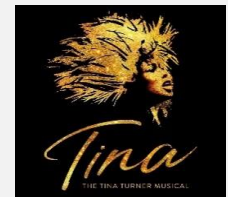
TINA - THE TINA TURNER MUSICAL

MUSICAL

From humble beginnings in Nutbush, Tennessee, to her transformation into the global Queen of Rock 'n' Roll, Tina Turner (Adrienne Warren) didn't just break the rules, she rewrote them. This new stage musical featuring her much-loved songs, reveals the untold story of a woman who dared to defy the bounds of her age, gender and race.

SCHEDULE: Monday – Saturday. Dark Sunday.

VENUE: Aldwych Theatre, Aldwych, WC2B 4DF now - 27 Jun 20



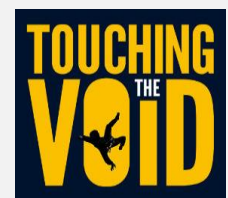
TOUCHING THE VOID

PLAY

Based on Joe Simpson's best-selling memoir, turned BAFTA-winning film, this extraordinary story charts Joe Simpson's and Simon Yates' struggle for survival on the perilous Siula Grande mountain in the Peruvian Andes. Life-affirming and often darkly funny, David Greig's thrilling adaptation takes the audience on an epic adventure that asks how far you'd be willing to go to survive.

SCHEDULE: Monday – Saturday. Dark Sunday.

VENUE: Duke of York's Theatre, St. Martin's Ln, WC2 9 Nov 19 - 29 Feb 20



UNCLE VANYA

PLAY

In the heat of summer, Sonya and her Uncle Vanya (Toby Jones) while away their days on a crumbling estate deep in the countryside, visited occasionally only by the local doctor Astrov (Richard Armitage). However, when Sonya's father suddenly returns with his beautiful new wife declaring that he intends to sell the house, the polite facades crumble and repressed feelings start to emerge with devastating consequences.

SCHEDULE: Tuesday – Sunday. Dark Monday.

VENUE: Harold Pinter Theatre, Panton Street, SW1Y 14 Jan 20 - 2 May 20



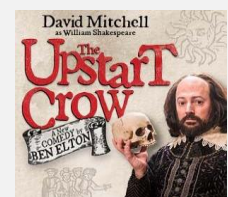
UPSTART CROW

COMEDY

David Mitchell makes his West End debut in Ben Elton's stage adaptation of the critically acclaimed BBC sitcom. This all-new comedy - written especially for the stage - will see Mitchell once more don the bald wig and bardish coddling pouch in his iconic characterisation of Will Shakespeare, directed by Olivier award-winner Sean Foley (The Ladykillers, Jeeves and Wooster and The Miser).

SCHEDULE: Monday – Saturday. Dark Sunday.

VENUE: Gielgud Theatre, Shaftesbury Road, W1D 7 Feb 20 - 25 Apr 20



WAITRESS

MUSICAL

The irresistible hit features original music by Grammy® nominee Sara Bareilles comes to London! Jenna, a waitress and expert pie maker who dreams of a way out of her small town and loveless marriage. A baking contest and the town's new doctor may offer her a chance at a fresh start, but Jenna must summon the strength and courage to rebuild her own life.

SCHEDULE: Monday – Saturday. Dark Sunday.

VENUE: Adelphi Theatre, Strand, WC2R Now - 28 Mar 20



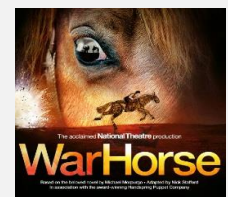
WAR HORSE

PLAY

The National Theatre's internationally-acclaimed smash-hit returns to London for a limited season at an exciting new venue located just steps away from Wembley Stadium. This powerfully moving and imaginative drama, filled with stirring music and songs, is a show of phenomenal inventiveness. At its heart are astonishing life-sized horses who bring breathing, galloping, charging horses to thrilling life on stage.

SCHEDULE: Tuesday – Sunday. Dark Monday.

VENUE: Troubadour White City, Wood Lane, W12 Now - 23 Nov 19



WHEN THE CROWS VISIT

PLAY

When a son returns home after being accused of a violent crime, a mother is forced to confront the ghosts of her past when the crows visit. Inspired by true events in modern-day India, Anupama Chandrasekhar explores the themes of Ibsen's Ghosts and the cyclical nature of oppression in a dark and thrilling world premiere.

SCHEDULE: Monday – Saturday. Dark Sunday.

VENUE: Kiln Theatre, Kilburn High Road, NW6 Now - 30 Nov 19




Call Reservations on 09 444 2298
for latest availability & prices.



WHITE CHRISTMAS **MUSICAL**

Make it a magical Christmas with this spectacular brand-new production of Irving Berlin's WHITE CHRISTMAS. Experience this 'terrific dose of pure escapism' (The Times), a timeless romantic comedy to warm hearts of all ages, featuring all the classic songs like Blue Skies, Sisters and the most famous festive song of all...White Christmas.


SCHEDULE: Monday – Saturday. Dark Sunday.
VENUE: Dominion Theatre, Tottenham Court Rd, W1P 16 Nov 19 - 4 Jan 20



WICKED **MUSICAL**

Based on the acclaimed novel that ingeniously re-imagined the stories and characters in 'The Wonderful Wizard of Oz', Wicked tells the incredible untold story of an unlikely but profound friendship between two sorcery students. Their extraordinary adventures in Oz will ultimately see them fulfil their destinies as Glinda The Good and the Wicked Witch of the West.

SCHEDULE: Monday – Saturday. Dark Sunday.
VENUE: Apollo Victoria Theatre, Wilton Road, SW1 Now - 23 May 20



WITNESS FOR THE PROSECUTION **PLAY**

Step inside the magnificent surroundings of The Chamber at London County Hall and experience the intensity and drama of Agatha Christie's gripping story of justice, passion and betrayal in a unique courtroom setting. Leonard Vole is accused of murdering a widow to inherit her wealth. Don't miss this landmark stage production on London's Southbank. See you in court.


SCHEDULE: Tuesday – Sunday. Dark Monday.
VENUE: London Country Hall, Belvedere Road, SE1 Now - 13 Sep 20



THE WOLF OF WALL STREET **EVENT**

Jordan Belfort. Stock-market millionaire at 26. Federal convict at 36. By day, he made thousands of dollars a minute. By night, he spent it as fast as he could. The Wolf of Wall Street places the audience front and centre of this heart-racing story. Experience Jordan's climb to power and craving for excess as the action unfolds around you in an extraordinary new performance space spread across four floors in Central London.


SCHEDULE: Tuesday – Sunday. Dark Monday.
VENUE: "STRATTON OAKMONT", Sun Street, EC2N Now - 19 Jan 20



THE WOMAN IN BLACK **PLAY**

Since 1989, millions of theatregoers have lived to tell the tale of one of the most exciting, spooky, gripping and successful theatre events ever staged. The Woman In Black is a gripping theatrical exploration of terror, 'a masterpiece' (The Guardian) that's been thrilling audiences of all ages with its unique blend of suspense, drama and bold stagecraft.

SCHEDULE: Tuesday – Saturday. Dark Sunday.
VENUE: Fortune Theatre, Russell Street, WC2 Now - 26 Sep 20



Shows/dates/times & venues are subject to change. Please call for latest details.

**Call Reservations on 09 444 2298
for latest availability & prices.**



ATTRACTIONS, SIGHTSEEING TOURS, AND OTHER UK ESSENTIALS

CHURCHILL WAR ROOMS

The original Cabinet War Rooms - today part of the Churchill War Rooms - sheltered the people at the heart of Britain's wartime government during the Blitz. Immerse yourself in this fascinating piece of living history in the underground maze of historic rooms that once buzzed with round-the-clock planning and plotting, strategies and secrets.

SCHEDULE: Open daily with some exceptions.

VENUE: Clive Steps, King Charles Street, SW1A **Nearest Tube:** Westminster



COCA-COLA LONDON EYE

Loved by Britons and tourists alike, the Coca-Cola London Eye is the world's tallest cantilevered observation wheel, over 40 stories high, with miles of panoramic views on a clear day. The gradual flight in one of 32 high-tech glass capsules takes approximately 30 minutes and offers spectacular views of London and its famous landmarks such as Big Ben and St Paul's Cathedral.

SCHEDULE: Open daily except Christmas Day and some exceptions.

VENUE: Westminster Bridge Rd, London SE1. **Nearest Tube:** Waterloo or Westminster



HAMPTON COURT PALACE

Hampton Court has grown from humble beginnings in the 11th century to one of the finest palaces in the world. Over 800 years of history can be explored through an introductory exhibition, a guide through Tudor kitchens, a costume guide tour, the Queen's state apartments, the King's apartments, and the most impressive Great Hall, England's last and greatest medieval hall.

SCHEDULE: Open daily with some exceptions.

VENUE: East Molesey, Surrey, KT8. **Nearest Rail:** Hampton Court Palace



JACK THE RIPPER COACH AND WALKING TOUR

Travel back in time on a vintage open top double-decker bus, and walk through an empty Smithfield market, home to the cock-lane Ghost. Then retrace the murder sites of Jack the Ripper, before heading to the safety of the Sherlock Holmes pub.

SCHEDULE: Duration 3 hours. Departures daily, except Tuesday and Thursday.

DEPARTS: Premium Tours, Victoria Coach Station, SW1V **Nearest Tube:** Victoria



KENSINGTON PALACE

Enjoy a wide range of daytime and evening events, including four redesigned visitor routes revealing both the secret and public lives of Kensington's inhabitants; a glamorous exhibition featuring rare and exquisite dresses from HM Queen Elizabeth II, Princess Margaret and Diana; the magnificent King's State Apartments; the Palace Gardens; and much more.

SCHEDULE: Open daily with some exceptions.

VENUE: Kensington Gardens, London, W8. **Nearest Tube:** High Street Kensington



LEEDS CASTLE, CANTERBURY, DOVER & GREENWICH TOUR

See Leeds Castle before it opens to the public with a unique guided tour, described as the "loveliest castle in the world", exploring the chapel, galleries, courtyards and banqueting hall. Then a scenic coastal drive to the white cliffs of Dover; Canterbury and its Cathedral; a drive through Greenwich and a cruise on the River Thames!

SCHEDULE: Duration 9 hours. Departures Mon, Tue, Wed, Fri, Sat.

DEPARTS: Premium Tours, Victoria Coach Station, SW1V **Nearest Tube:** Victoria



LONDON IN A DAY INC. TOWER OF LONDON & WESTMINSTER ABBEY

Immerse yourself in the quintessential sites on this comprehensive tour by foot and scenic river cruise that includes more entrance tickets than any other London in a Day tour, including Westminster Abbey, Tower of London and Tower Bridge. You'll also see not just one but two Changing of The Guards, from the very best vantage points

SCHEDULE: Approximately 8 hours. Departures Monday, Fridays, Saturdays March to October.

DEPARTS: Churchill Statue, Parliament Sq, SW1P 3JX **Nearest Tube:** Westminster



**Call Reservations on 09 444 2298
for latest availability & prices.**



MAGIC OF LONDON FULL-DAY TOUR WITH CREAM TEA AT HARRODS

One of our best selling London tours, it's a day tour with professional guide, and includes being the first group inside St Paul's Cathedral, followed by Changing of the Guard at Buckingham Palace, Tower of London with ample time to view the Crown Jewels, an exclusive guided river cruise on the Thames, ending with Cream Tea at Harrods!

SCHEDULE: Duration 9.5 hours. Departures daily.

DEPARTS: Premium Tours, Victoria Coach Station, SW1V Nearest Tube: Victoria



ORIGINAL LONDON HOP-ON HOP-OFF SIGHTSEEING TOUR

The essential introduction to London for more than 65 years! With over 80 stops on 3 main sightseeing routes, free walking tours and free Hop-On Hop-Off Thames River Cruise Pass, this really is the finest way to see London and her landmarks. Sit back, relax and take in the sights, sounds and iconic views of the city, both ancient and modern. 24 or 48 hours options available.

SCHEDULE: Available daily except Christmas Day.

VENUE: 48 Buckingham Palace Road, London, SW1W Nearest Tube: Victoria



OXFORD, STRATFORD, WARWICK CASTLE & COTSWOLDS TOUR

At Warwick Castle, the greatest medieval castle in Britain, enter over the footbridge and explore the castles ramparts, towers and gardens. In charming Stratford-Upon-Avon, you'll explore the birthplace of William Shakespeare. Lunch in a 15th century inn in the picturesque Cotswolds (food/drink not included). Oxford, the city of dreaming spires, boasts one of the worlds greatest - and oldest - universities. Enjoy a unique, all-access tour, before heading to the colleges spectacular dining hall,

SCHEDULE: Duration 11 hours. Departures daily.

DEPARTS: Premium Tours, Victoria Coach Station, SW1V Nearest Tube: Victoria



TOWER OF LONDON

In the early 1080s, William the Conqueror began to build a massive stone tower at the centre of his London fortress. Take a guided tour with one of the Yeoman Warders around one of the most famous fortified buildings in the world and discover its 900 year history as a royal palace and fortress, prison and place of execution, mint, arsenal, menagerie and jewel house.

SCHEDULE: Open daily except 24-26 December and 1 January.

VENUE: Tower Hill, London EC3N. Nearest Tube: Tower Hill



TOWER OF LONDON COMPLETE GUIDED TOUR

Take a fully guided tour of one of the most spectacular medieval castles on this VIP visit to the Tower of London. With skip the line, early entrance, you'll get to watch the famous Opening Ceremony before being among the first into the Jewel House to see the Crown Jewels. Then you'll tour the very best parts of the tower and learn the pivotal roles they played in the bloody history of the United Kingdom.

SCHEDULE: Open daily except 24-26 December and 1 January.

VENUE: Tower Hill, London EC3N. Nearest Tube: Tower Hill



TOTAL LONDON FULL DAY TOUR WITH THE LONDON EYE

A complete full day tour - be the first group inside St Paul's with professional guide exclusive to Premium Tours. Plus: enjoy a cruise on the Thames; a visit to the Tower of London; a panoramic drive seeing the icons of London like Westminster Abbey and Houses of Parliament; viewing the Changing of the Guard (subject to availability); and a flight on the London Eye!

SCHEDULE: Duration 8.5 hours. Departures daily.

DEPARTS: Premium Tours, Victoria Coach Station, SW1V Nearest Tube: Victoria



THE VIEW FROM THE SHARD

The Shard is an iconic, landmark building on the London skyline, is the tallest building in Western Europe. The View is situated at the top of The Shard, on floors 68, 69 and 72, and almost twice the height of any other viewing platform in London. 800ft into the skies above London, you'll experience an astonishing 360 degree, 40 mile view over the city and beyond unfurled beneath you.

SCHEDULE: Open Daily.

VENUE: The Shard, Joiner Street, London SE1. Nearest Tube: London Bridge



**Call Reservations on 09 444 2298
for latest availability & prices.**



WARNER BROS. STUDIO TOUR LONDON

An amazing new opportunity to explore the magic of the Harry Potter™ films – the most successful film series of all time. From breathtakingly detailed sets to stunning costumes, props and animatronics, explore a unique showcase of the extraordinary British artistry, technology and talent that went into making the most successful film series of all time.

SCHEDULE: Available daily except Christmas Day and Boxing Day.

DEPARTS: Premium Tours, Victoria Coach Station, SW1V Nearest Tube: Victoria



WELCOME TO LONDON TOUR

A complete full day London tour with an expert guide. There is no better way to see all the sight and sounds of London, be the first group inside St Paul's cathedral with a professional guide followed by an afternoon visit to The Tower of London! Plus: enjoy a cruise on the Thames and viewing the Changing of the Guard (subject to availability)!

SCHEDULE: Duration 8 hours. Departures daily.

DEPARTS: Premium Tours, Victoria Coach Station, SW1V Nearest Tube: Victoria



WINDSOR CASTLE & BUCKINGHAM PALACE

The perfect Royal tour - visit two official residences of the Queen! Enjoy an extended visit to Windsor Castle in the morning. Then explore the state apartments and gardens at Buckingham Palace in the afternoon!

SCHEDULE: Duration 7.5 hours. Departures Mon, Thu, Sat July 23 - September 30.

DEPARTS: Premium Tours, Victoria Coach Station, SW1 Nearest Tube: Victoria



WINDSOR CASTLE MORNING TOUR

From William the Conqueror all the way through to our current Queen, successive monarchs have lived here and left their mark on what is now the largest continuously occupied castle in the world. See for yourself the splendour of St. Georges Chapel and the sumptuous state apartments. Explore Windsor itself, a pretty town full of shops and historic pubs.

SCHEDULE: Duration 5 hours. Departures Mon, Thu, Sat.

DEPARTS: Premium Tours, Victoria Coach Station, SW1V Nearest Tube: Victoria



WINDSOR CASTLE, STONEHENGE AND BATH TOUR

Be amongst the first people to enter Windsor Castle; see Runnymede where the Magna Carta was signed in 1215. Soak up the charming atmosphere of your traditional pub lunch (included in the price Nov-Mar); unlock the secrets of Stonehenge; enjoy the beautiful Georgian city of Bath, followed by time to shop and explore (Roman Baths Entry included Apr-Oct.)

SCHEDULE: Duration 12 hours. Departures daily, with some exceptions.

DEPARTS: Premium Tours, Victoria Coach Station, SW1V Nearest Tube: Victoria



Shows/dates/times & venues are subject to change. Please call for latest details.